

LuK Basic tool kit (OE)

The basic tool kit (our part no. TOOL.225) forms the basis of the modular tool system. It contains those tools that are generally required for all repairs to double clutches. Together with a vehicle-specific tool kit, they form a complete kit for professional repairs. This is based on all dry double clutch systems currently available from LuK.



1. Puller with spindle and pressure piece
2. 3 thumb screws
3. 3 M10 threaded bolts, 100 mm long
4. 3 M10 threaded bolts, 160 mm long
5. Circlip pliers, angled
6. Magnet
7. Transmission support with height adjustment
8. 2 plugs for driveshaft holes
9. DMF reset tool
10. Unlocking key
11. Special open-end wrench
12. DVD with assembly/disassembly instructions and training video

Part No. TOOL.225

Supplementary tool kit for Volkswagen (OE)

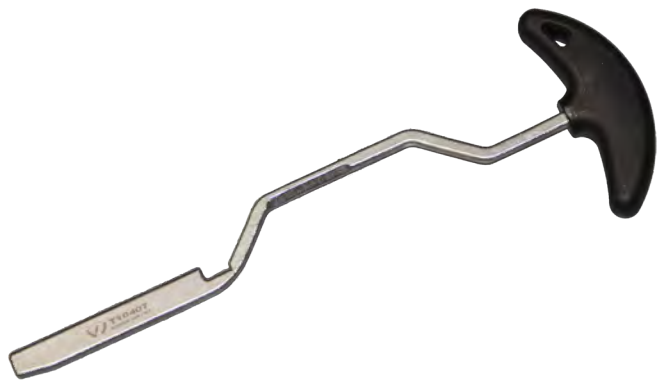
This vehicle-specific tool kit (our part no. 0AM.TOOL05) must be combined with the basic tool kit. It can be used to disassemble, assemble and adjust both first generation dry double clutches (up to May 2011) and second generation dry double clutches (from June 2011) in vehicles manufactured by Audi, SEAT, ŠKODA and Volkswagen with a 0AM transmission.



1. Dial gauge with tripod
2. Reference gauge 32.92 mm (1st generation, K2)
3. Reference gauge 48.63 mm (1st generation, K1)
4. Reference gauge 32.12 mm (2nd generation, K2)
5. Reference gauge 48.42 mm (2nd generation, K1)
6. 3 thrust pieces
7. Support sleeve for disassembly
8. Pressure sleeve for assembly
9. Plugs
10. 3 hooks
11. Setting gauge for reference gauge
12. Coupling hooks
13. Weight, 3.5 kg
14. DVD with assembly/disassembly instructions and training video

Part No. 0AM.TOOL05

Mechatronic Assembly Lever (OE)



Insertion of the assembly lever between release lever and gearbox housing, makes it possible to remove the load from the plungers of Mechatronic unit then they may be removed by hand from cups of engaging levers, so that the Mechatronic unit can be removed and inserted.

Part No. 0AM.TOOL02

Setting Tool - Release Bearing (OE)



Used for determining position of release bearings "K1 and K2"

on

Generation 1,

7-speed dual clutch gearbox 0AM.

Part No. 0AM.TOOL03

Setting Tool - Release Bearing (OE)



Used for determining position of release bearings "K1 and K2"

on

Generation 2,

7-speed dual clutch gearbox 0AM.

Part No. 0AM.TOOL08

0AM After-market Tool-kit



0AM, 7 Speed DSG Tool-kit
for
Generation 1, Generation 2
and
Plug-in Hybrid

Part No. 0AM.TOOL06

0AM After-market Supplementary Tool-kit



0AM, 7 Speed DSG
 Supplementary tool-kit for 0AM.TOOL06
 Mechatronic Assembly Lever
 and
 Transmission case separation tool

Part No. 0AM.TOOL07

0AM DSG 7 Speed Input Seal Extractor Tool



0AM, 7 Speed DSG
 Used to remove shaft seal of inner input shaft on
 7-speed dual clutch gearbox 0AM.

Part No. 0AM.TOOL09

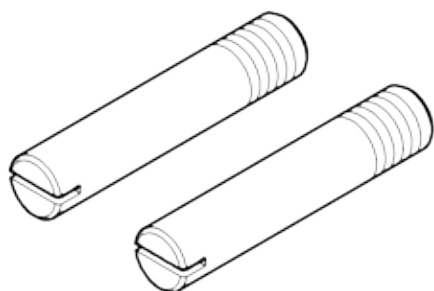
0AM DSG 7 Speed Input Seal Installer Tool



0AM, 7 Speed DSG
 Used to install input shaft seal on 7-speed dual
 clutch gearbox 0AM.

Part No. 0AM.TOOL10

0AM DSG 7 Speed Mechatronic Guide Pin



7-speed dual clutch gearbox 0AM
 To guide the mechatronic component during the
 mounting of the mechatronic unit

Part No. 0AM.TOOL11

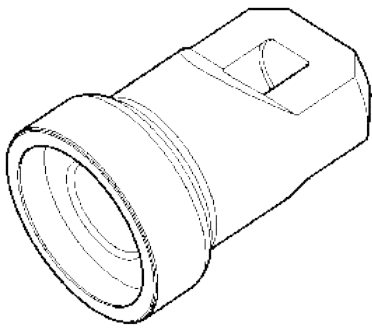


AUTOMATIC CHOICE



THE AUTOMATIC TRANSMISSION PARTS WAREHOUSE

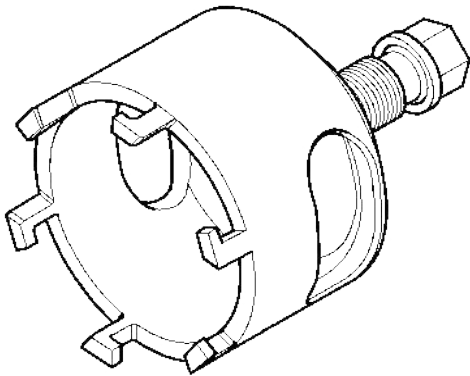
0AM DSG 7 Speed Clutch Install/Pressing Tool



Used for installing clutch on 7-speed dual clutch gearbox 0AM.

Part No. 0AM.TOOL12

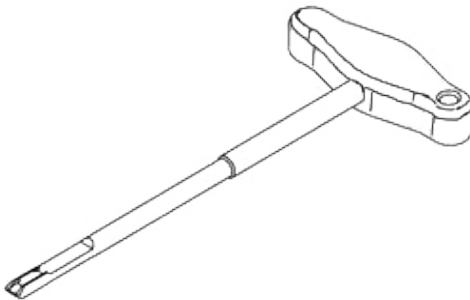
0AM DSG 7 Speed Clutch Removal Tool



This puller is used to remove the dual clutch his puller is a modification of the earlier puller and optimizes the flow of power during pulling and allows for future, longer drive shafts. This tool supersedes the previous puller, which is to be taken out of service.

Part No. 0AM.TOOL13

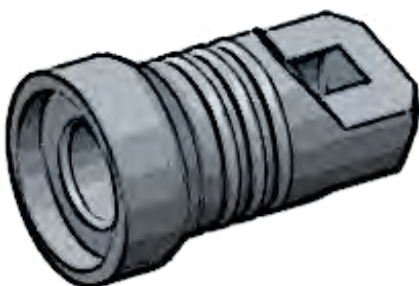
0AM DSG 7 Speed Selector Lever Setting Tool



For setting selector lever push button in fitting position

Part No. 0AM.TOOL14

0AM DSG 7 Speed Clutch Removal & Install Tool



This special tool is used to remove and install the double clutch and is used in conjunction with the support device 08D.TOOL01. The integrated viewing window provides the user with visual control during the press-on process.

Part No. 0AM.TOOL15

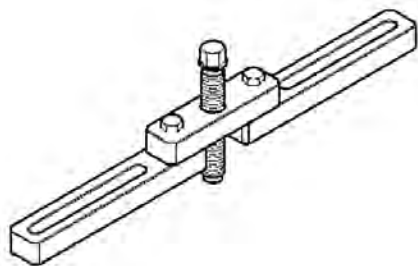


AUTOMATIC CHOICE



THE AUTOMATIC TRANSMISSION PARTS WAREHOUSE

**0AM DSG 7 Speed Clutch Housing Assembly
Support Bridge**



Used used in conjunction with 0AM.TOOL12 or 0AM.TOOL15 to emove and replace the clutch housing.

Part No. 08D.TOOL01



A
U
T
O
M
A
T
I
C
C
H
O
I
C
E



T
H
E
A
U
T
O
M
A
T
I
C
T
R
A
N
S
M
I
S
S
I
O
N
P
A
R
T
S
W
A
R
E
H
O
U
S
E