

TH200-4R (MW-9)

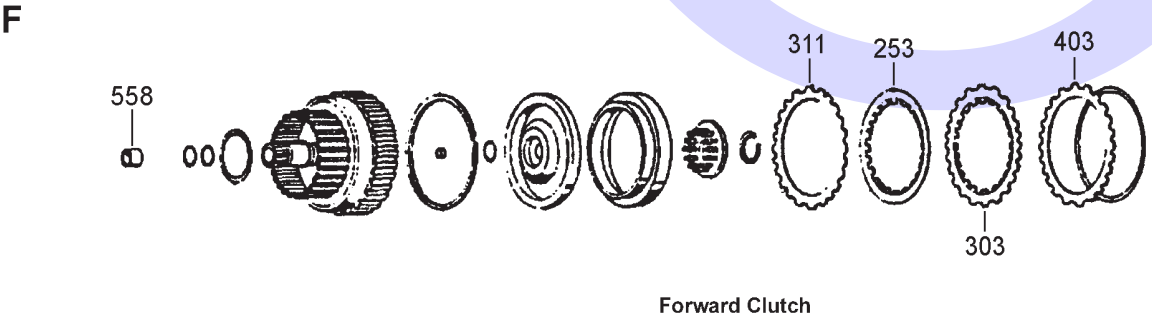
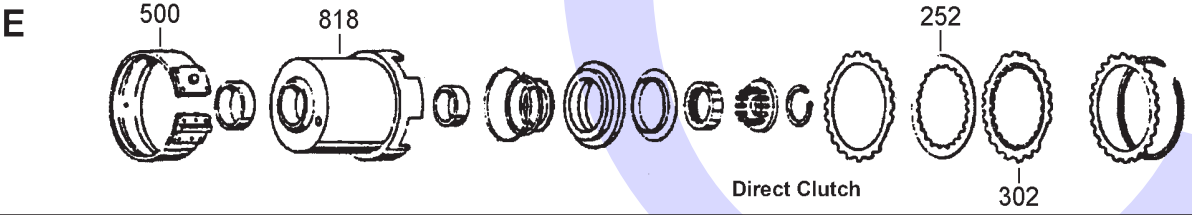
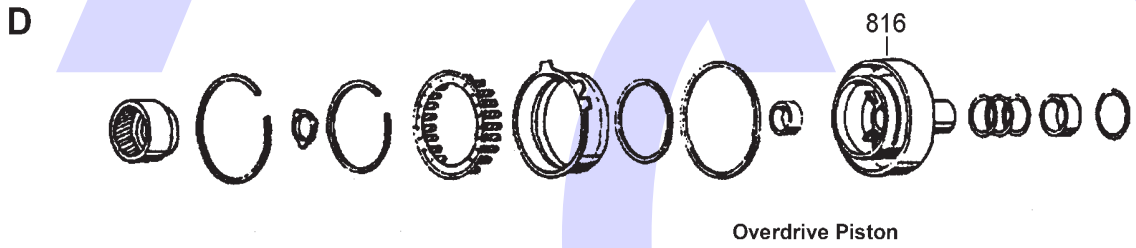
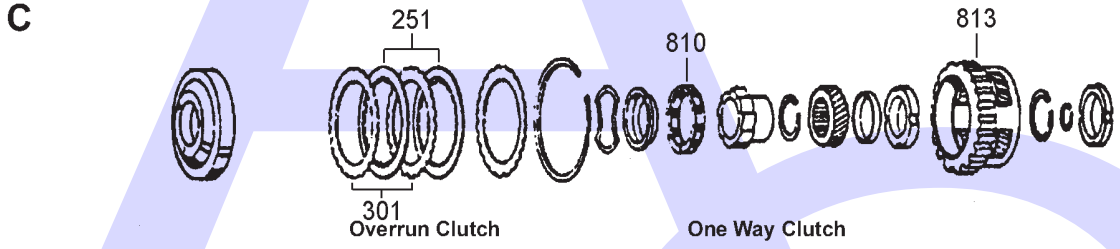
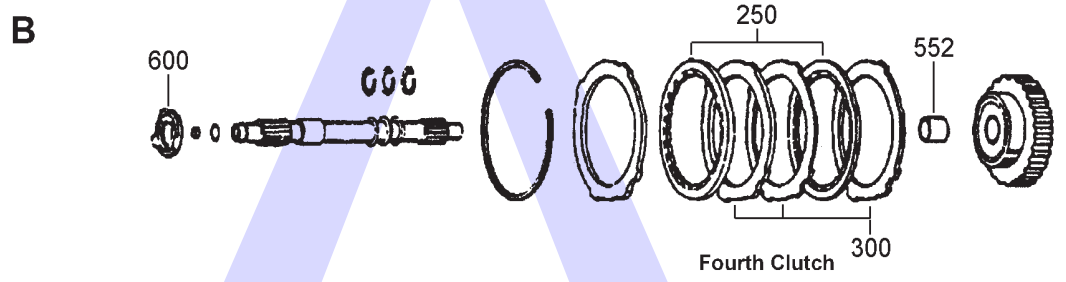
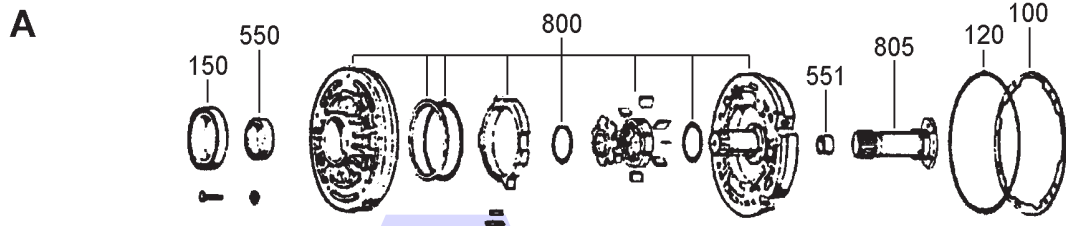
4 SPEED RWD



AUTOMATIC CHOICE



THE AUTOMATIC TRANSMISSION PARTS WAREHOUSE



TH200-4R (MW-9)

4 SPEED RWD

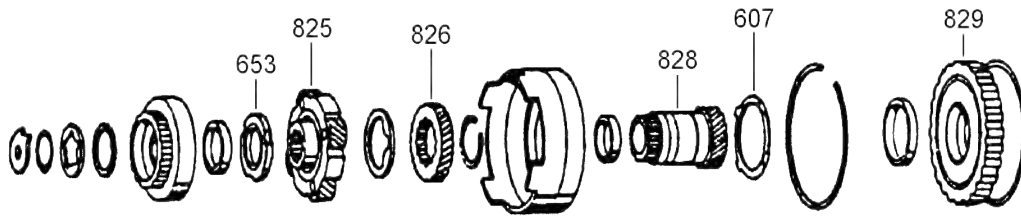


AUTOMATIC CHOICE



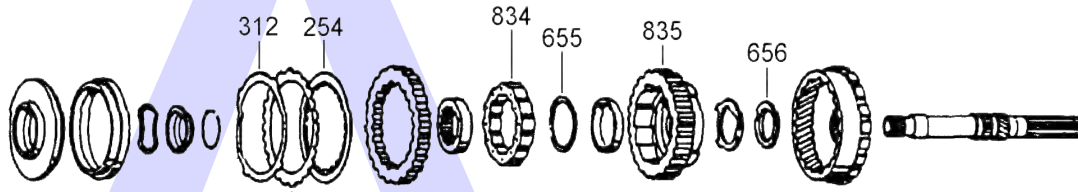
THE AUTOMATIC TRANSMISSION PARTS WAREHOUSE

G



Front Planet, Sun Gear & Shell

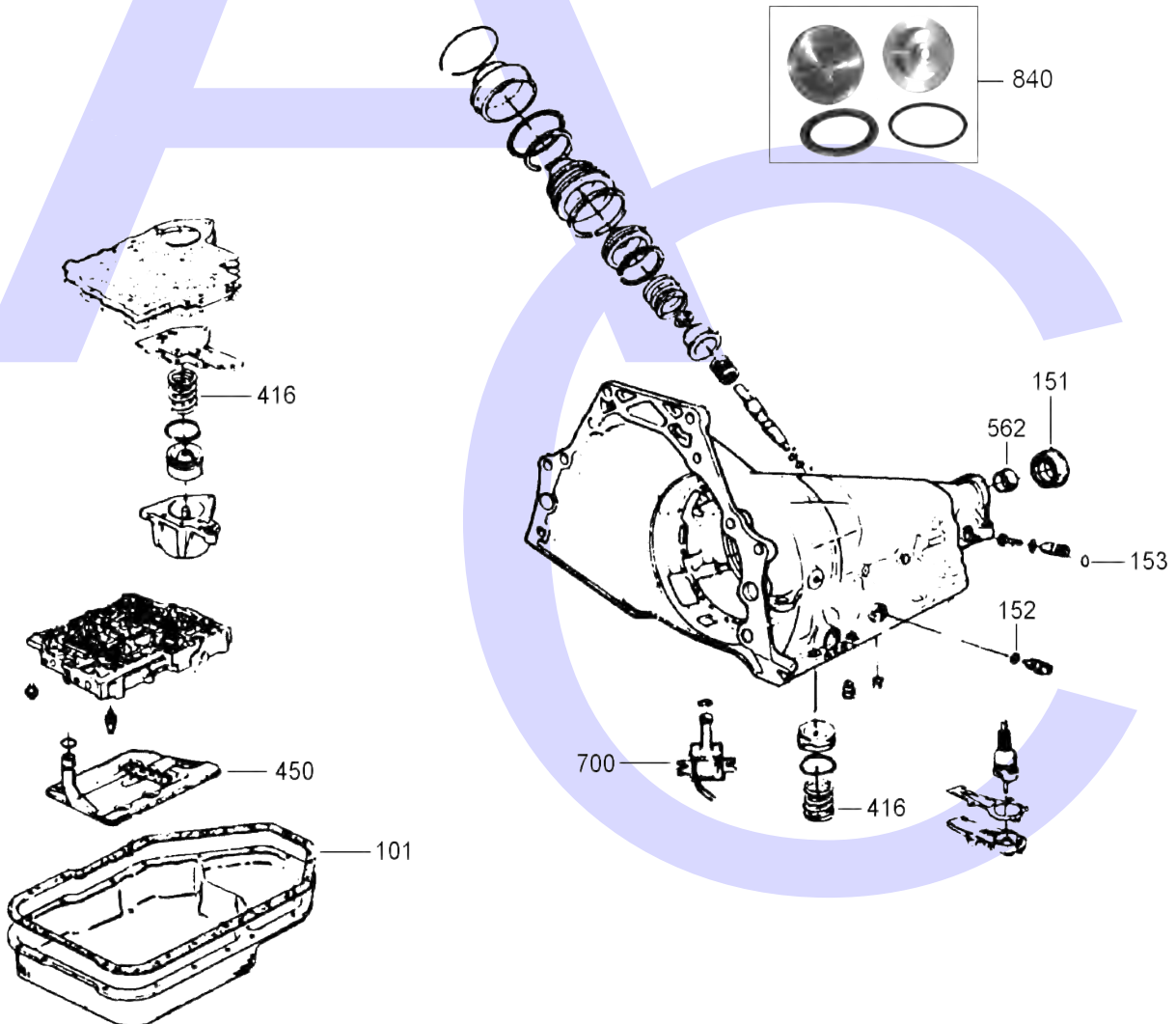
H



Low Reverse Clutch

Low One Way Clutch

J



TH200-4R (MW-9)

4 SPEED RWD



AUTOMATIC CHOICE



THE AUTOMATIC TRANSMISSION PARTS WAREHOUSE

ILL NO.	DESCRIPTION	YEARS	QTY	PART NO
KITS				
Kit	Super Overhaul Kit (Includes Friction & Steels).....	81-90	1	TH2004R.SOK01
Kit	Master Overhaul Kit	81-90	1	TH2004R.MOK01
Kit	Banner Kit (Overhaul Kit With Frictions).....	81-90	1	TH2004R.BAK01
Kit	Overhaul Kit (Transtec).....	81-90	1	TH2004R.OHK01
Kit	Overhaul Kit (Precision).....	81-90	1	TH2004R.OHK51
GASKETS				
100A	Pump Gasket	81-90	1	TH2004R.GAS02
101J	Pan Gasket	81-90	1	TH2004R.GAS01
RUBBER COMPONENTS				
120A	'O' Ring, Front Pump to Case ...	81-90	1	TH2004R.SQR01
NI	Filler Tube Seal Multi Lip.....	81-90	1	TH125.LIP03
METAL CLAD SEALS				
150A	Front Pump Seal.....	81-90	1	TH700.MCS01
151E	Extension Housing.....	81-90	1	TH180.MCS02
152E	Selector Shaft	81-90	1	TH180.MCS03
153E	Speedometer Seal	81-90	1	TH200.MCS03
NI	Speedo Driven Gear Shaft (With Spring).....	81-90	1	TH180.MCS04
NI	Speedo Driven Gear Shaft (Without Spring).....	81-90	1	TH180.MCS05
MOULDED PISTONS				
SEALING RINGS				
FRICITION PLATES				
Kit	Friction Plate.....	81-90	1	TH2004R.FRK01
Kit	Friction Plate (Alto)	81-90	1	TH2004R.FRK51
250B	Overdrive Brake/4th (175mm OD x 2.00mm x 36T) ..	81-90	2	TH2004R.FRP01
251C	Overrun Clutch (129mm OD x 2.00mm x 40T) ..	81-90	2	TH2004R.FRP02
252E	Direct Clutch (133mm OD x 2.00mm x 30T) ..	81-90	3-5	TH200.FRP01
252E	Direct Clutch (Borg Warner) (133mm OD x 2.00mm x 30T) ..	81-90	3-5	TH200.FRP02
253F	Forward Clutch (133mm OD x 2.00mm x 30T) ..	81-90	3-6	TH200.FRP01
253F	Forward Clutch (Borg Warner) (133mm OD x 2.00mm x 30T) ..	81-90	3-6	TH200.FRP02
254H	Low & Reverse Brake (140mm OD x 2.00mm x 44T) ..	81-90	4-6	TH200.FRP03

ILL NO.	DESCRIPTION	YEARS	QTY	PART NO
STEEL PLATES				
Kit	Steel Plate.....	81-90	1	TH2004R.STK01
Kit	Steel Plate (Alto).....	81-90	1	TH2004R.STK51
300B	Overdrive Brake/4th (148mm ID x 2.00mm x 6T)	81-90	3	TH2004R.STP01
301C	Overrun Clutch (101mm ID x 2.00mm x 36T)	81-90	2	TH2004R.STP02
302E	Direct Clutch (110mm ID x 2.30mm x 26T)	81-90	3-6	TH200.STP02
303F	Forward Clutch (110mm ID x 2.00mm x 30T)	81-90	2-4	TH200.STP01
304H	Low & Reverse Brake (119mm ID x 1.93mm x 22T)	81-90	5-7	TH200.STP03
311F	Forward Clutch Waved (110mm ID x 1.60mm x 30T)	81-90	1	TH200.STP04
312H	Low & Reverse Waved (119mm ID x 2.00mm x 4T)	81-90	1	TH200.DIA01
PRESSURE PLATES				
403F	Forward Clutch.....	81-90	1	TH200.PP01
SPRINGS & CIRCLIPS				
416J	Spring, 1-2 Accumulator(White)	81-90	1	TH2004R.SPR01
FILTERS				
450J	Pan Filter.....	81-90	1	TH2004R.FIL01
BANDS				
500E	Intermediate Band.....	81-90	1	TH200.BAN01
500E	Intermediate Band (Alto) Heavy Duty POWERBAND™ ..	81-90	1	TH200.BAN02
BUSHINGS				
Kit	Bush Kit.....	81-90	1	TH2004R.BK01
550A	Front Pump	81-90	1	TH700.BUS01
550A	Front Pump (PTFE Lined) (Sonnax@ Click Here for Info) ..	81-90	1	POWER.BUS07
551A	Stator Support Rear	81-90	1	TH2004R.BUS02
552B	Overrun Drum	81-90	1	TH2004R.BUS03
558F	Forward Drum	81-90	1	TH2004R.BUS04
562J	Extension Housing	81-90	1	TH350.BUS09
THRUST WASHERS & BEARINGS				
Kit	Washer Kit (No Selectives)	81-90	1	TH2004R.TWK01
600B	Thrust Washer Stator (No. 4, 4.67mm Grey)	81-90	AR	TH2004R.THW01
600B	Thrust Washer Stator (No. 5, 4.78mm Yellow).....	81-90	AR	TH2004R.THW02
607G	Shell to Low/ Reverse Clutch Housing .080" (Plastic).....	81-90	1	TH200.THW01
653G	Front Planet to Hub.....	81-90	1	TH200.THW03
655H	Rear Planet to Sprag Race.....	81-90	1	TH200.THW04
656H	Sun Gear to Rear Ring Gear	81-90	1	TH200.BE01

