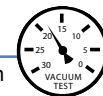


Critical Wear Areas & Vacuum Test Locations

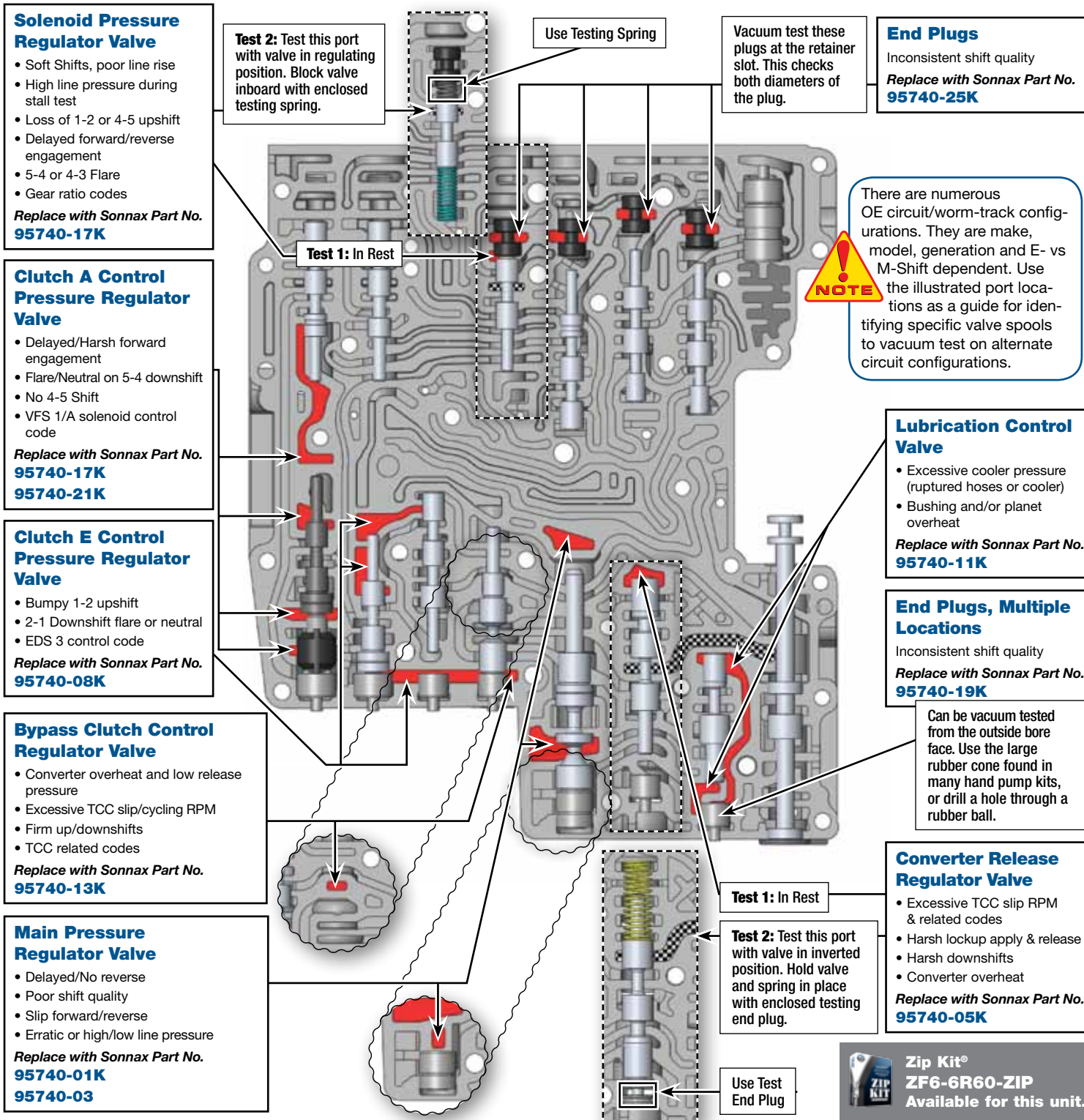


NOTE: OE valves are shown in rest position and should be tested in rest position unless otherwise indicated. Test locations are pointed to with an arrow. Springs are not shown for visual clarity. Low vacuum reading indicates wear and Sonnax parts noted for replacement.

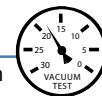
Lower Valve Body • Jaguar ZF6HP26, M-Shift Shown Here

Click on Sonnax part numbers to see more information.

NOTE: Some ZF6HP21/26 E versions in the 700 series BMWs have a smaller end plug at the clutch E control pressure regulator valve and a different pressure regulator valve diameter.



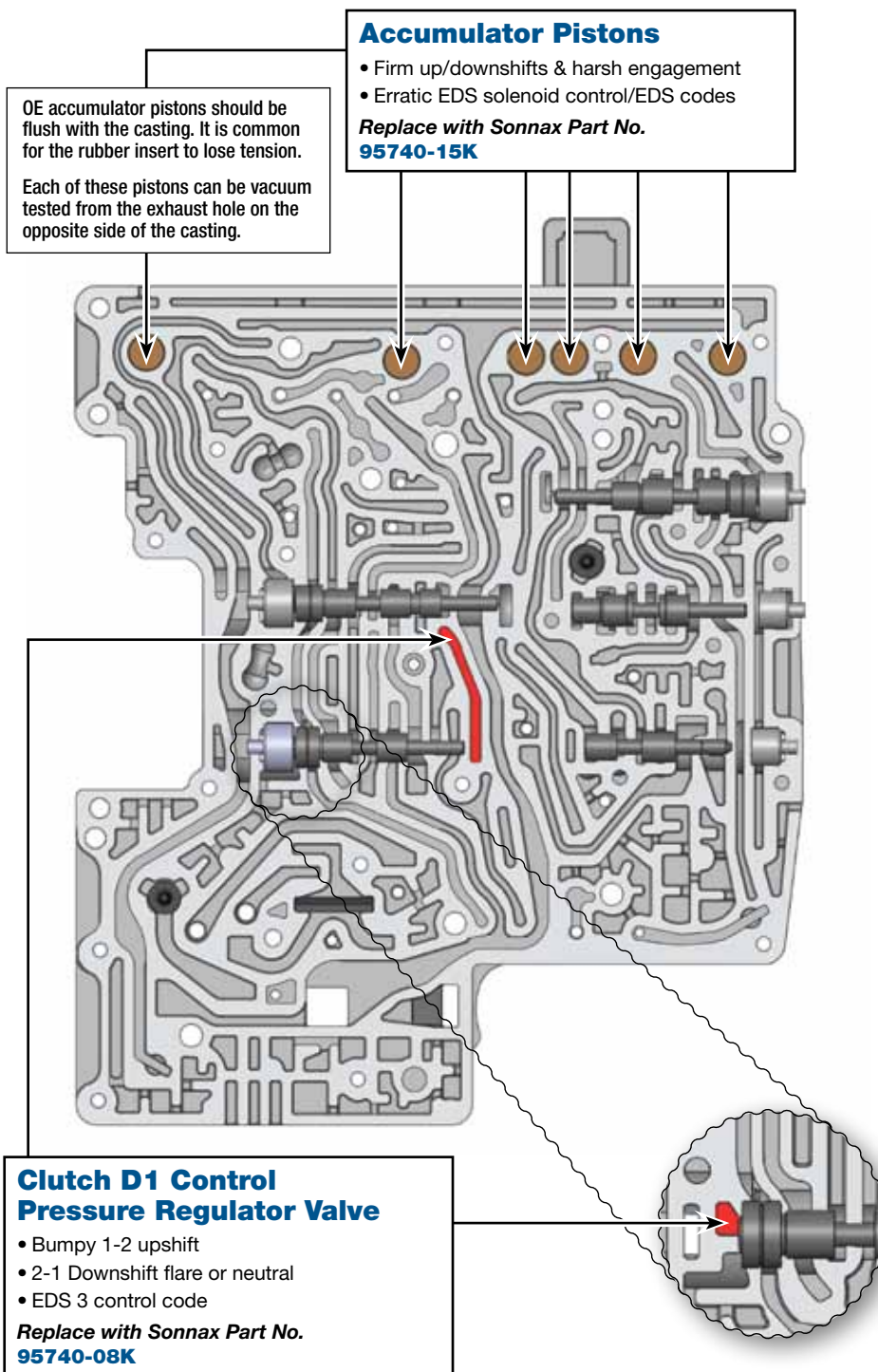
Critical Wear Areas & Vacuum Test Locations



NOTE: OE valves are shown in rest position and should be tested in rest position unless otherwise indicated. Test locations are pointed to with an arrow. Springs are not shown for visual clarity. Low vacuum reading indicates wear and Sonnax parts noted for replacement.

Click on Sonnax part numbers to see more information.

Zip Kit® ZF6-6R60-ZIP
Available for this unit.

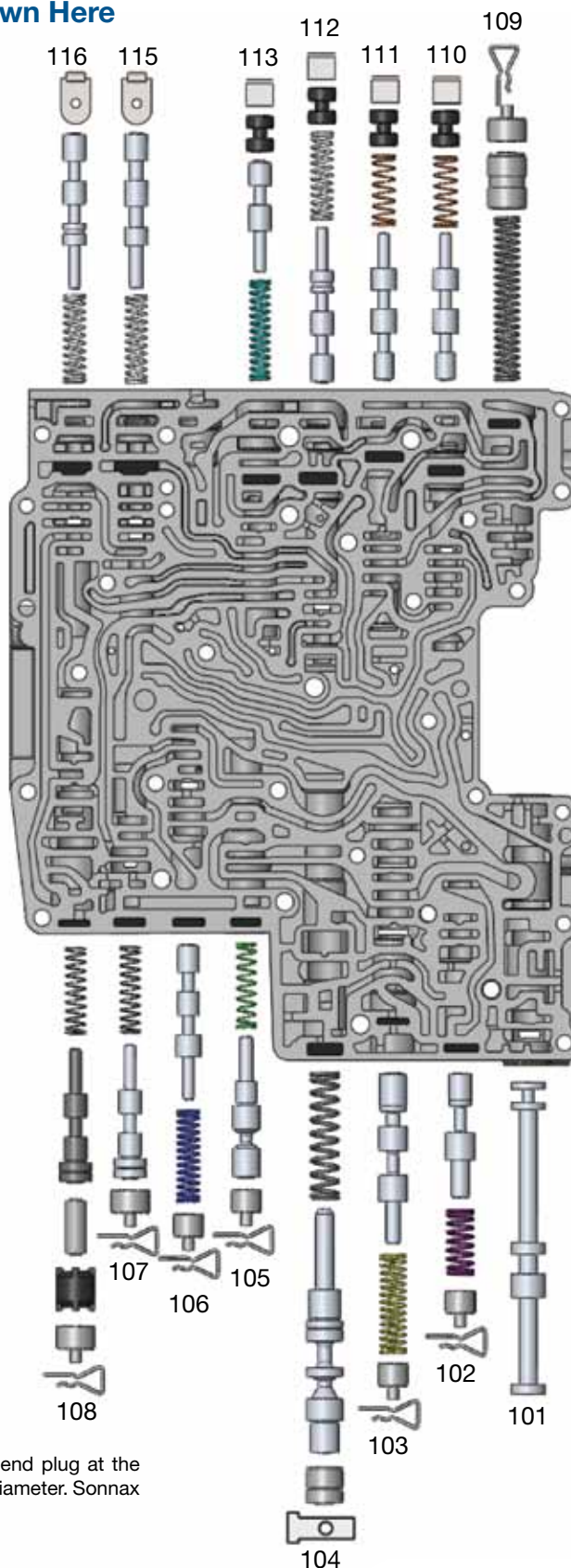


OE Exploded View

Lower Valve Body • Jaguar ZF6HP26, M-Shift Shown Here

NOTE: Depending upon vehicle application, the OE springs shown may not be present.

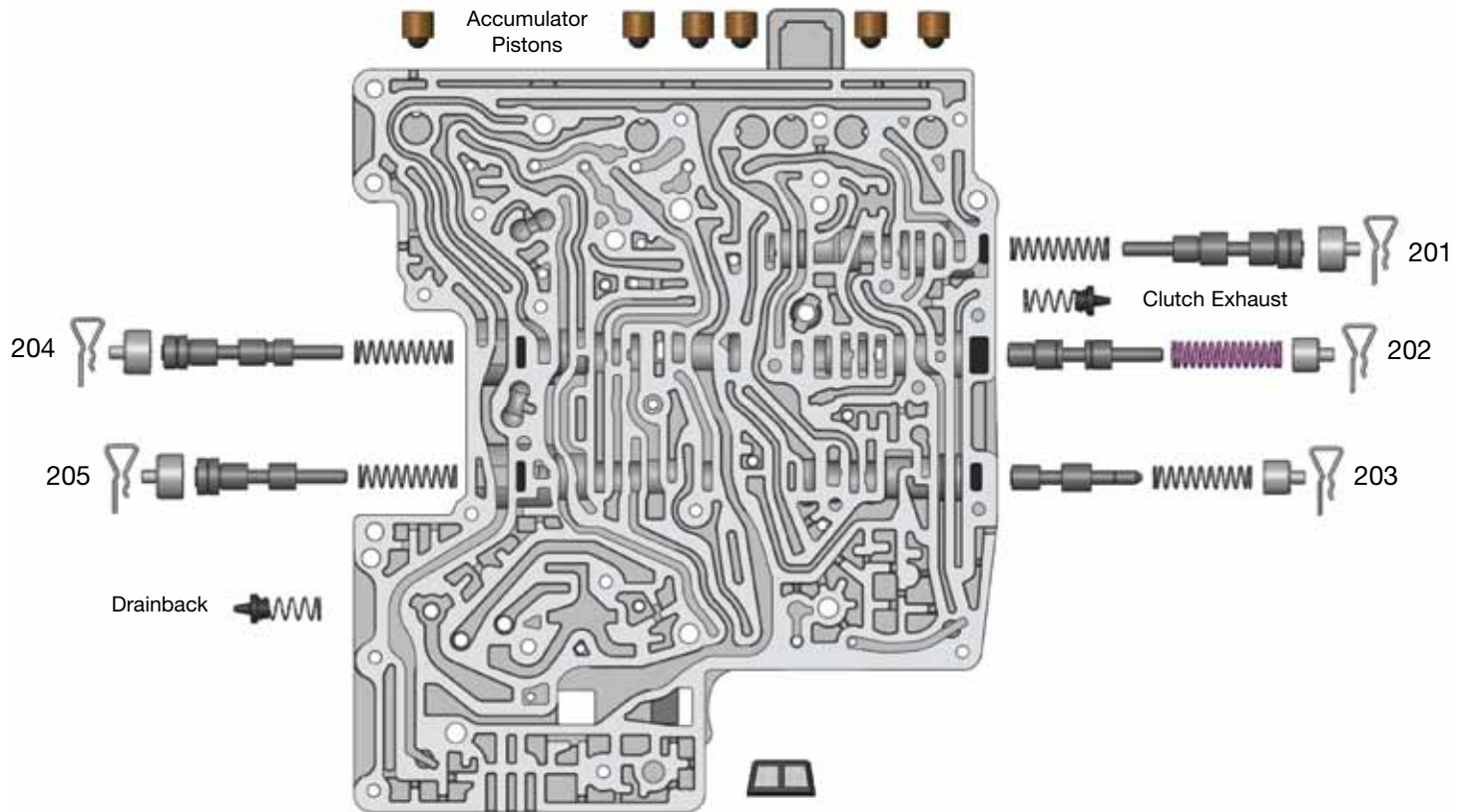
Lower Valve Body Descriptions	
I.D No.	Description
101	Manual Valve
102	Lubrication Control Valve
103	Converter Release Regulator Valve
104	Main Pressure Regulator Valve
105	Bypass Clutch Control Regulator Valve
106	Clutch E Latch Valve
107**	Clutch E Control Pressure Regulator Valve
108	Clutch A Control Pressure Regulator Valve
109	Delay Accumulator Piston
110	Solenoid Multiplex Valve
111	Drive Enable Valve
112	Clutch D1 Latch Valve
113	Solenoid Pressure Regulator Valve
115	Clutch B Latch Valve
116	Clutch A Latch Valve



****NOTE:** Some ZF6HP21/26 E versions in the 700 series BMWs have a smaller end plug at the clutch E control pressure regulator valve and a different pressure regulator valve diameter. Sonnax part numbers **95740-08K**, **95740-01K** & **95740-03** will not fit these locations.

OE Exploded View

Upper Valve Body • Jaguar ZF6HP26, M-Shift Shown Here



Upper Valve Body Descriptions

I.D. No.	Description
201	Clutch B Regulator Valve
202	Clutch D2 Regulator Valve
203	Clutch D2 Latch Valve
204	Clutch C Regulator Valve
205	Clutch D1 Control Pressure Regulator Valve