



# 4T65E

## 4 SPEED FWD (Electronic Control)

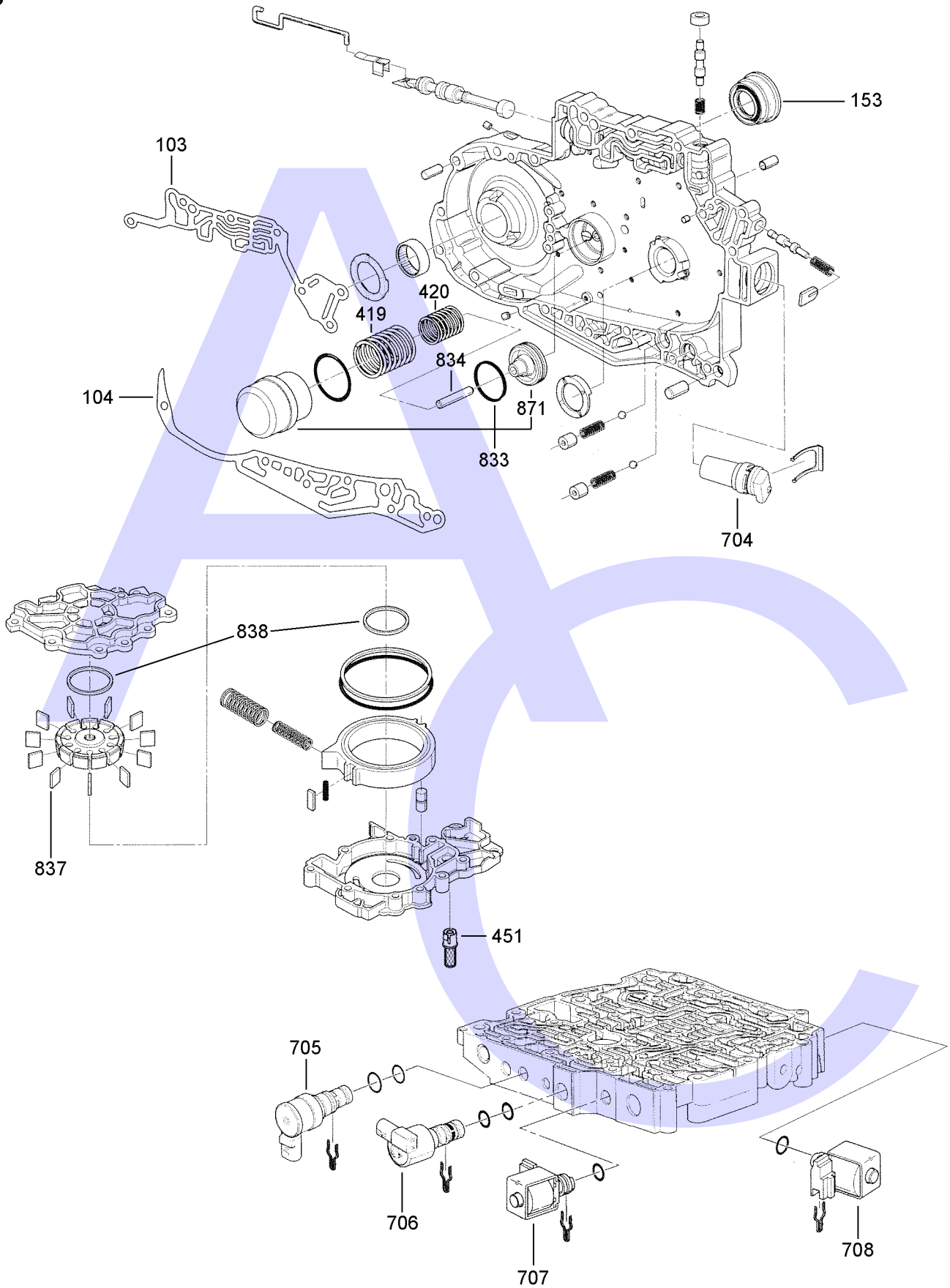


AUTOMATIC CHOICE



THE AUTOMATIC TRANSMISSION PARTS WAREHOUSE

B



# 4T65E

## 4 SPEED FWD (Electronic Control)

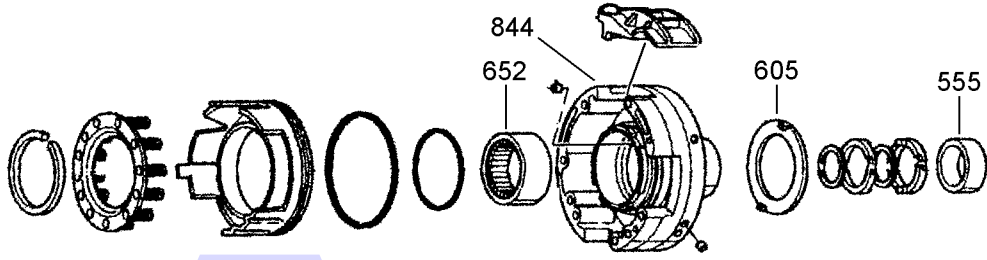


AUTOMATIC CHOICE

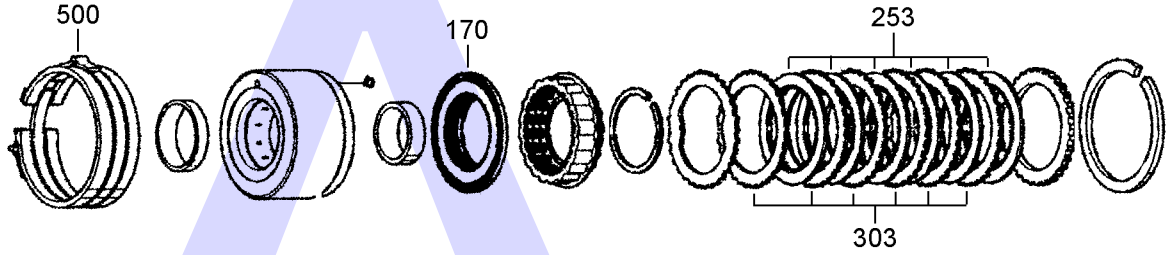


THE AUTOMATIC TRANSMISSION PARTS WAREHOUSE

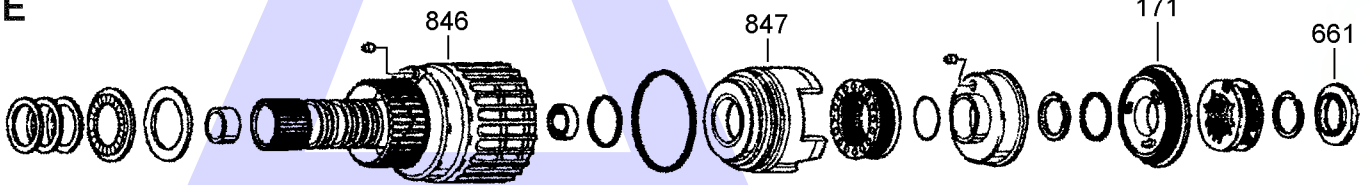
C



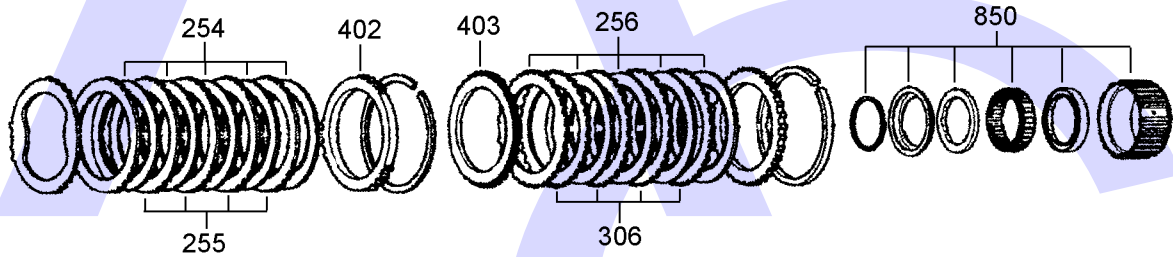
D



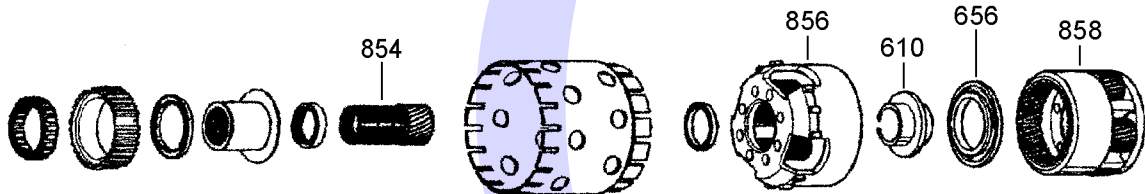
E



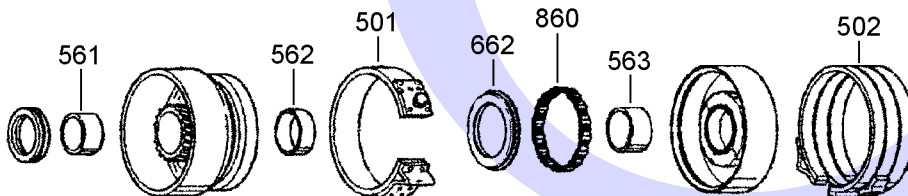
F



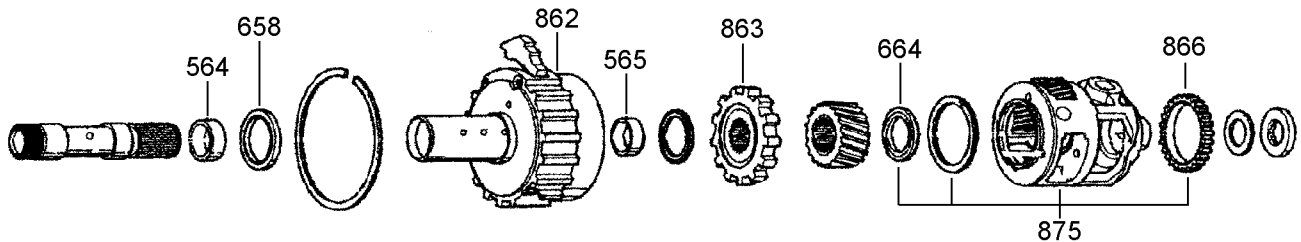
G



H



J



# 4T65E

## 4 SPEED FWD (Electronic Control)



AUTOMATIC CHOICE



THE AUTOMATIC TRANSMISSION PARTS WAREHOUSE

ILL NO.	DESCRIPTION	YEARS	QTY	PART NO
<b>KITS</b>				
Kit	Overhaul Kit (Except Volvo) (Transtec) (To Fit Volvo Requires The Following: 1 x 4T65E.MCS03 & 1 x 4T65E.GK02) ..... 97-ON	97-ON	1	<b>4T65E.OHK01</b>
Kit	Overhaul Kit (Volvo) (Transtec) .....	97-ON	1	<b>4T65E.OHK02</b>
Kit	Valve Body Gasket (Volvo) .....	99-ON	1	<b>4T65E.GK02</b>
Kit	Overhaul Kit (Transtec) (Transfer Case).....	97-ON	1	<b>4T65E.OHK03</b>
<b>GASKETS</b>				
100A	Side Cover, Outer (Aftermarket)	97-ON	1	<b>4T65E.GAS01</b>
100A	Side Cover, Outer (OEM).....	97-ON	1	<b>4T65E.GAS02</b>
101A	Oil Pan (Rubber).....	97-ON	1	<b>4T60E.GAS01</b>
103A	Upper Channel Plate (1 Piece Design) .....	97-ON	1	<b>4T60E.GAS02</b>
103B	Channel Plate to Case (Upper).	97-ON	1	<b>4T65E.GAS05</b>
104B	Channel Plate to Case (Lower).	97-ON	1	<b>4T65E.GAS06</b>
105A	V.B. Separator Plate to Valve Body (US Models).....	97-ON	1	<b>4T65E.GAS03</b>
106A	V.B. Separator Plate to Channel Plate (US Models) .....	97-ON	1	<b>4T65E.GAS04</b>
<b>RUBBER COMPONENTS</b>				
120A	Side Cover Inner Seal (Lathe Cut).....	97-ON	1	<b>4T65E.SQR01</b>
132A	Filter Seal, (Multi Lip).....	97-ON	1	<b>TH440.RUB01</b>
<b>METAL CLAD SEALS</b>				
150A	Converter (Volvo).....	97-ON	1	<b>4T65E.MCS01</b>
150A	Converter (Except Volvo).....	97-ON	1	<b>TH125.MCS01</b>
151A	Manual Lever.....	97-ON	1	<b>TH125.MCS03</b>
152A	Axle, Right Hand (Ex Volvo) .....	97-ON	1	<b>TH125.MCS02</b>
152A	Axle, Right Hand (Volvo).....	97-ON	1	<b>4T65E.MCS03</b>
153B	Axle, Left Hand (All).....	97-ON	1	<b>4T65E.MCS04</b>
<b>MOULDED PISTONS</b>				
170D	Second Clutch (13.60mm OD)..	97-ON	1	<b>4T65E.PIS02</b>
171E	Third Clutch (No Check Ball) .....	97-ON	1	<b>4T65E.PIS01</b>
<b>SEALING RINGS</b>				
<b>FRICION PLATES</b>				
Kit	Friction Plate (Not Volvo 2002 On) .....	97-00	1	<b>4T65E.FRK01</b>
Kit	Friction Plate (Including Volvo) .....	01-ON	1	<b>4T65E.FRK02</b>
Kit	Friction Plate (Pawl Type OWC Design) .....	03-ON	1	<b>4T65E.FRK03</b>
Kit	Friction & Steel Plate (Alto) (Volvo Only) .....	99-ON	1	<b>4T65E.FRK51</b>
Kit	Friction & Steel Plate (Alto).....	97-00	1	<b>4T65E.FRK52</b>
Kit	Friction & Steel Plate (Alto).....	01-ON	1	<b>4T65E.FRK53</b>
250A	Fourth Clutch (Not Volvo) (136mm OD x 1.80mm x 32T) ..	97-99	2	<b>4T65E.FRP02</b>
251A	Fourth Clutch Internal Spline (Inc Volvo) (136mm OD x 1.50mm x 32T) ..	99-ON	2	<b>4T65E.FRP03</b>

ILL NO.	DESCRIPTION	YEARS	QTY	PART NO
<b>FRICION PLATES Cont...</b>				
252A	Fourth Clutch External Spline (Inc Volvo) (89mm ID x 1.50mm x 3T) .....	99-ON	2	<b>4T65E.FRP04</b>
253C	Second Clutch (139mm OD x 1.80mm x 42T) ..	97-ON	6	<b>4T65E.FRP01</b>
254F	3rd Clutch (1 Sided Internal Spline) (112mm OD x 2.00mm x 32T) ..	97-ON	5	<b>TH440.FRP05</b>
255F	3rd Clutch (1 Sided External Spline) 85.70mm OD x 2.00mm x 12T)	97-ON	5	<b>TH440.FRP06</b>
256F	Input Clutch (118mm OD x 1.65mm x 32T) ..	97-02	4	<b>4T60E.FRP01</b>
256F	Input Clutch (118mm OD x 1.65mm x 30T) ..	03-ON	4	<b>4T65E.FRP05</b>
<b>STEEL PLATES</b>				
Kit	Steel Plate .....	97-ON	1	<b>4T65E.STK01</b>
Kit	Friction & Steel Plate (Alto) (Volvo Only) .....	99-ON	1	<b>4T65E.FRK51</b>
Kit	Friction & Steel Plate (Alto).....	97-00	1	<b>4T65E.FRK52</b>
Kit	Friction & Steel Plate (Alto).....	01-ON	1	<b>4T65E.FRK53</b>
300A	Fourth Clutch (89.23mm ID x 2.10mm x 3T) ...	97-ON	2	<b>4T65E.STP01</b>
303D	Second Clutch (98.55mm ID x 1.70mm x 36T) ..	97-ON	5	<b>4T65E.STP03</b>
303D	Second Clutch Oversize (98.55mm ID x 2.23mm x 36T) ..	97-ON	AR	<b>4T65E.STP05</b>
306F	Input Clutch (89.33mm ID x 1.93mm x 26T) ..	97-ON	4	<b>TH440.STP10</b>
<b>PRESSURE PLATES</b>				
402F	3rd Clutch (3.88mm) .....	97-ON	1	<b>TH440.PP04</b>
403F	Input Clutch (Apply) (4.83mm) .....	97-ON	1	<b>TH440.PP05</b>
<b>SPRINGS &amp; CIRCLIPS</b>				
419B	Spring, 3-4 Accumulator (Outer)	97-ON	1	<b>4T65E.SPR01</b>
420B	Spring, 3-4 Accumulator (Inner)	97-ON	1	<b>4T65E.SPR02</b>
<b>FILTERS</b>				
450A	Filter, Oil Pan .....	97-ON	1	<b>4T60E.FIL01</b>
451B	Oil Pump Pressure Screen .....	97-ON	1	<b>TH440.FIL02</b>
NI	Screen, TCC Solenoid .....	97-ON	1	<b>TH440.FIL04</b>
NI	Screen, Shift Solenoid .....	97-ON	3-4	<b>TH440.FIL07</b>
NI	Screen, 1-2 Servo .....	97-ON	1	<b>TH440.FIL08</b>
<b>BANDS</b>				
500D	Reverse Brake Band.....	97-00	1	<b>4T60E.BAN03</b>
501H	1-2 Brake Band.....	97-ON	1	<b>4T60E.BAN01</b>
502H	Forward Brake Band.....	97-00	1	<b>4T60E.BAN02</b>
<b>BUSHINGS</b>				
Kit	Bush Kit (12 Bushings) .....	97-ON	1	<b>4T65E.BK01</b>
550A	Sleeve, Channel Plate .....	97-ON	1	<b>4T65E.SL01</b>
552A	Stator Support (Front).....	97-ON	1	<b>TH700.BUS11</b>
553A	Converter Hub .....	97-ON	1	<b>TH125.BUS02</b>
555C	Bush, Driven Sprocket Support	97-ON	1	<b>TH440.BUS08</b>

# 4T65E

## 4 SPEED FWD (Electronic Control)



AUTOMATIC CHOICE



THE AUTOMATIC TRANSMISSION PARTS WAREHOUSE

ILL NO.	DESCRIPTION	YEARS	QTY	PART NO
<b>BUSHINGS Cont...</b>				
561H	Bush, Rear Sun Gear (Front Wide).....	97-ON	1	4T60E.BUS03
562H	Bush, Rear Sun Gear (Rear narrow).....	97-ON	1	4T60E.BUS04
563H	Bush, 2-1 Coast Drum (31.75mm Wide).....	97-ON	1	4T60E.BUS05
564J	Bush, Final Drive Internal Gear (Front).....	97-ON	1	TH440.BUS09
565J	Bush, Final Drive Internal Gear (Rear).....	97-ON	1	TH440.BUS09
<b>THRUST WASHERS &amp; BEARINGS</b>				
Kit	Thrust Washer .....	97-ON	1	4T65E.TK01
Kit	Repair, Final Drive Planet (16 Large Steel Washers).....	97-ON	1	TH440.TK02
Kit	Bearing Kit.....	97-ON	1	TH440.TK03
600A	Thrust Washer, Drive Sprocket to Case Cover.....	97-ON	1	4T65E.THW02
601A	Thrust Washer, 4th Hub to Case Cove .....	97-ON	1	4T65E.THW07r
602A	Thrust Washer, Drive Sprocket to Support .....	97-ON	1	4T65E.THW04
602A	Thrust Washer Kit, Drive Sprocket to Support (Early & Late Types).....	97-ON	1	4T65E.THW06
603A	Thrust Washer, 4th Clutch Hub to Driven Sprocket .....	97-ON	1	4T65E.THW01
604A	Thrust Washer, Driven Sprocket to Support (3 Legs).....	97-ON	1	4T65E.THW03
605C	Thrust Washer, Driven Sprocket Support to 2nd Clutch Drum)....	97-ON	1	4T65E.THW05
610G	Oil Dam, Front Planet (Plastic).....	97-ON	1	TH440.THW01
650A	Bearing, Converter Reactor (Presses Inside).....	97-ON	1	TH125.THW15
651A	Needle Bearing, Ext Housing....	97-ON	1	TH440.BE02
652C	Bearing, Driven Sprocket Sup ..	97-ON	1	TH440.BE02
656G	Bearing, Front Planet to Rear Planet.....	97-ON	1	TH440.THW10
657H	Bearing, Rear Planet to Sun Gear Drum.....	97-ON	1	TH440.THW11
658J	Bearing, Reaction Drum to Internal Ring Gear .....	97-ON	1	TH440.THW12
659J	Bearing, Park Gear to Ring Gear .....	97-ON	1	TH440.THW17
660E	Bearing, 2nd Clutch Drum to Input Drum .....	97-ON	1	TH440.THW14
661E	Bearing, Input Drum (Rear) .....	97-ON	1	TH440.THW15
662H	Bearing, 1-2 Sprag to Forward Band Drum .....	97-ON	1	TH440.THW16
664J	Bearing, Sun Gear to Diff Carrier (57.15mm O.D.).....	97-ON	1	TH440.THW18
NI	Bearing Axle Stabiliser, R.Hand (Bearing & Seal Teckpak) .....	97-ON	1	TH125.BE05
<b>ELECTRICAL COMPONENTS</b>				
701A	Switch, Manifold (Pressure Range Sensor) .....	97-ON	1	4T65E.ELE01
701A	Switch, Manifold (Pressure Range Sensor) .....	03-ON	1	4T65E.ELE10
702A	Internal Mode Switch .....	97-ON	1	4T65E.ELE08
703A	Sensor, Output (VSS) Not Volvo (2 Prong 50.80mm Tall) .....	97-99	1	4T60E.ELE01
703A	Sensor, Output (VSS) Not Volvo (Long Connector).....	99-ON	1	4T60E.ELE09
703A	Sensor, Output Speed (VSS) (70cm Loom Volvo Only) .....	97-01	1	4T65E.ELE04

ILL NO.	DESCRIPTION	YEARS	QTY	PART NO
<b>ELECTRICAL COMPONENTS Cont...</b>				
703A	Sensor, Output Speed (VSS) (70cm Loom Volvo Only) .....	02-ON	1	4T65E.ELE12
704B	Sensor, Input Speed (TSS) (Except Volvo).....	97-ON	1	4T65E.ELE02
704B	Sensor, Input Speed (TSS) (Volvo Only) .....	97-ON	1	4T65E.ELE03
705B	TCC Solenoid (PWM) .....	97-ON	1	4L60E.SOL01
706B	EPC Solenoid (Borg Warner) ( <a href="#">Click here for Info</a> ) .....	97-02	1	4T40E.SOL01
706B	EPC Solenoid (Silver Bosch)....	03-ON	1	4T40E.SOL05
707B	1-2/3-4 Shift Solenoid ('A') .....	97-ON	1	4T65E.SOL03
708B	2-3 Shift Solenoid ('B') .....	97-ON	1	4T65E.SOL03
709A	Internal Wiring Loom (14 Pin) (Can Use 4T65E.ELE14) .....	97-ON	1	4T65E.ELE06
709A	Internal Wiring Loom (19 Pin) (Can Use 4T65E.ELE14) .....	00-ON	1	4T65E.ELE07
709A	Internal Wiring Loom (17 Pin) (Can Use 4T65E.ELE14) .....	03-ON	1	4T65E.ELE13
709A	Internal Wiring Loom (Universal all Connector Types).....	97-ON	1	4T65E.ELE14
<b>VALVE BODY PARTS</b>				
Kit	Shift Kit .....	97-ON	1	4T65E.SK01
Kit	Boost Valve & Sleeve (Sonnax®).....	97-ON	1	4T65E.VA01
Kit	1-2 & Reverse Servo Boost Valve (Sonnax® <a href="#">Click here for Info</a> ) (Requires Tool 4T60E.VA15) ....	97-ON	1	TH440.VA10
Kit	Tool Kit For TH440.VA10 .....	97-ON	1	4T60E.VA15
Kit	Oversize Pressure Regulator Valve (Requires 4T60E.VA17 Toolkit) (Sonnax® <a href="#">Click here for Info</a> ) ...	97-ON	1	4T60E.VA16
Kit	Toolkit for 4T60E.VA16 (Sonnax®).....	97-ON	1	4T60E.VA17
Kit	TCC Regulator Apply valve Kit (Sonnax® <a href="#">Click here for Info</a> ) ...	97-ON	1	4T65E.VA02
Kit	TCC Apply Valve Kit (Requires 4T65E.VA04 Reamer) (Sonnax® <a href="#">Click here for Info</a> ) ..	97-ON	1	4T65E.VA03
NI	(Reaming Tool For 4T65E.VA03) (Sonnax®).....	97-ON	1	4T65E.VA04
Kit	Oversized TCC Apply Valve Kit (Requires Tool 4T65E.VA06 and Valve Body Fixture AG4.VA05) (Sonnax® <a href="#">Click here for Info</a> ) ...	97-ON	1	4T65E.VA05
NI	Reaming Tool for 4T65E.VA05 (Sonnax®).....	97-ON	1	4T65E.VA06
NI	Universal Valve Body Fixture (Sonnax® <a href="#">Click here for Info</a> ) ...	97-ON	1	AG4.VA05
<b>HARD PARTS</b>				
805A	Pump Drive Shaft (254mm) .....	97-ON	1	4T65E.SH01
807A	Reluctor Ring, Input Speed Sensor (25 Teeth).....	97-ON	1	4T65E.SEN01
808A	Hub & Shaft, 4th Clutch .....	97-ON	1	4T60E.DRU05
809A	Chain, (w/ Mouse Ear Link & D Pins) (12.70mm Wide) (Dual Chains) .....	97-ON	1	4T65E.CH01
810A	Gear, Drive Sprocket (35Teeth).....	97-ON	1	4T65E.GE03
810A	Gear, Drive Sprocket (33Teeth Dual Chain).....	97-ON	1	4T65E.GE04
812A	Gear, Driven Sprocket (35Teeth).....	97-ON	1	4T65E.GE01

# 4T65E

## 4 SPEED FWD (Electronic Control)



AUTOMATIC CHOICE



THE AUTOMATIC TRANSMISSION PARTS WAREHOUSE

ILL NO.	DESCRIPTION	YEARS	QTY	PART NO
<b>HARD PARTS Cont...</b>				
812A	Gear, Driven Sprocket (33Teeth Dual Chain).....	97-ON	1	<b>4T65E.GE02</b>
814A	Turbine Shaft (158.75mm).....	97-ON	1	<b>4T65E.SH02</b>
815A	Stator/Drive Sprocket Support..	97-ON	1	<b>4T65E.SUP03</b>
833B	Piston Assembly, 3-4 Accumulator (Aluminium Replacement) .....	97-ON	1	<b>4T65E.ACC02</b>
834B	Pin, 3-4 Accumulator.....	97-ON	1	<b>4T65E.PIN01</b>
837B	Pump Vane, (17.970mm).....	97-ON	11	<b>TH440.PUM03</b>
838B	Ring, Pump Vane.....	97-ON	2	<b>TH440.PUM06</b>
844C	Driven Sprocket Support Assy..	97-ON	1	<b>4T65E.SUP02</b>
846E	Input Drum.....	97-ON	1	<b>4T60E.DRU08</b>
847E	Piston, Input Clutch.....	97-ON	1	<b>TH440.PIS03</b>
850F	One Way Clutch Assy, 3rd Roller (Complete Assy) .....	97-02	1	<b>4T60E.OWC01</b>
854G	Sun Gear, Input (With 2 Flats on Splines).....	97-ON	1	<b>4T60E.SUN02</b>
856G	Front Planetary (12 Lug Outer).	97-ON	1	<b>4T65E.PL01</b>
858G	Rear Planetary (Interior Spline Beveled Both Ends).....	97-ON	1	<b>TH440.PL02</b>
860H	One Way Clutch, 1-2 Roller (14 Rollers, Plastic Cage).....	97-ON	1	<b>4T60E.OWC04</b>
862J	Ring Gear, Final Drive (Except Volvo) (70 Right Angled Teeth) .....	97-ON	1	<b>4T60E.PL06</b>
863J	Parking Gear.....	97-ON	1	<b>TH440.GE02</b>
866J	Sensor Ring (VSS 29T) .....	97-ON	1	<b>4T65E.ELE05</b>
867A	Piston, 2-3 Accumulator (Deep Design Without Spring Recess).....	97-ON	1	<b>TH440.ACC01</b>
867A	Piston, 2-3 Accumulator (Deep Design With Spring Recess).....	97-ON	1	<b>TH440.ACC02</b>
868A	Piston, 1-2 Accumulator (Deep Design Without Spring Recess).....	97-ON	1	<b>TH440.ACC01</b>
868A	Piston, 1-2 Accumulator (Deep Design With Spring Recess).....	97-ON	1	<b>TH440.ACC02</b>
869A	Pin, 2-3 Accumulator (Sonnax Oversized) (Allows Re Use of Worn Piston) 97-ON	97-ON	1	<b>TH440.VA01</b>
870A	Pin, 1-2 Accumulator (Sonnax Oversized) (Allows Re Use of Worn Piston) 97-ON	97-ON	1	<b>TH440.VA01</b>
871B	3-4 Accumulator Piston (Sonnax®, <a href="#">Click Here for Info</a> )..	97-ON	1	<b>4T65E.ACC01</b>
875J	Final Drive 3.29 Ratio (Except Volvo) (34 Tooth Sun gear) .....	97-ON	1	<b>4T65E.DIFF01</b>
Kit	Differential Repair Kit (Contains parts to repair the differential carrier but the carrier must be serviceable) (Kit comprises of - diff sun gear, diff ring gear and diff planet wheels and spindles) .....	97-ON	1	<b>4T65E.DIFF02</b>
<b>SPECIAL ITEMS</b>				
NI	Diff Lube Tube Retainer (Sonnax® <a href="#">Click here for Info</a> ) ...	97-On	1	<b>4T60E.RET01</b>
NI	Cooler Line Connector (Short Type).....	04-ON	AR	<b>4T65E.CON01</b>
NI	Cooler Line Connector (Long Type).....	05-ON	AR	<b>4T65E.CON02</b>

ILL NO.	DESCRIPTION	YEARS	QTY	PART NO
<b>TOOLS &amp; MANUALS</b>				
NI	Input Shaft Teflon Seal Installation Kit .....	97-ON	1	<b>4T60E.TOOL03</b>
NI	ATSG Repair Manual.....	97-ON		<b>4T65E.MAN01</b>
NI	ATSG Update Manual.....	97-ON		<b>4T65E.MAN04</b>
NI	Volvo Repair Manual.....	99-ON		<b>4T65E.MAN02</b>
NI	Universal Valve Body Fixture (Sonnax® <a href="#">Click here for Info</a> ) ...	97-ON	1	<b>AG4.VA05</b>